

by NATUZZI
DIVANI & DIVANI



■ A09601X



■ A09604X



■ A09603X



■ A09602X



■ A09607X



■ A09606X



■ A09605X



■ A09611X



■ A09608X



■ A09609X



■ A09610X



■ A09612X



■ A09613X



■ A09614X



■ A09615X



■ A09616X

ALL PICTURES SHOWN ARE FOR ILLUSTRATIVE PURPOSE ONLY. ACTUAL PRODUCT MAY VARY DUE TO PRODUCT ENHANCEMENT.

SCHEMATICS

Throw



70cm x 130cm
27,56" x 51,18"

FINISHINGS

Finishing



BLUE



Pied De Poule



Ghiaccio



Verde Petrolio



Righe



Tartan



ANTHRACITE



GREY



TAUPE



Blu/Tortora



Blu/Ruggine



Blu/Lilla

TECHNICAL INFORMATION

NOTES



■ A131LN0



■ A131LN0

ALL PICTURES SHOWN ARE FOR ILLUSTRATIVE PURPOSE ONLY. ACTUAL PRODUCT MAY VARY DUE TO PRODUCT ENHANCEMENT.

SCHEMATICS

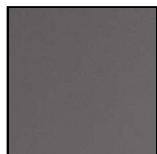
SQUARE ACCENT



40cm x 50cm H 45cm
15,75" x 19,69" H 17,72"

FINISHINGS

Frame finishing



NICKEL

Top finishing



CANALETTO
WALNUT

TECHNICAL INFORMATION

A CHARMING ACCENT. Words are more charming if you say them with the right accent. And the Conversano is a perfect accent table to spruce up your space with a pinch of design and lightheartedness

PRODUCT DETAIL

The Conversano table: a very useful complement that will become a fundamental detail of your style in decorating. It's composed of a chromed, fixed metal base and a practical wooden tray.

NOTES

by NATUZZI
DIVANI & DIVANI



■ A15902X



■ A15901X

ALL PICTURES SHOWN ARE FOR ILLUSTRATIVE PURPOSE ONLY. ACTUAL PRODUCT MAY VARY DUE TO PRODUCT ENHANCEMENT.

SCHEMATICS

VASE



12cm H 39cm
4,72" H 15,35"

14cm H 48cm
5,51" H 18,9"

FINISHINGS

Finishing



Bianco/Verde

TECHNICAL INFORMATION

NOTES

by NATUZZI
DIVANI & DIVANI



■ A16007X



■ A16006X

SCHEMATICS

VASE



23cm H 21cm

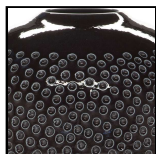
9,06" H 8,27"

33,5cm H 33,5cm

13,19" H 13,19"

FINISHINGS

Finishing



Vinaccia

TECHNICAL INFORMATION

NOTES

by NATUZZI
DIVANI & DIVANI



■ A16101X



■ A16102X

SCHEMATICS

VASE



23cm H 21cm
9,06" H 8,27"

28cm H 28cm
11,02" H 11,02"

FINISHINGS

Finishing



ORANGE

TECHNICAL INFORMATION

NOTES

DIVANI & DIVANI by NATUZZI



■ A16901X

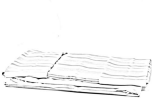


■ A16903X

ALL PICTURES SHOWN ARE FOR ILLUSTRATIVE PURPOSE ONLY. ACTUAL PRODUCT MAY VARY DUE TO PRODUCT ENHANCEMENT.

SCHEMATICS

TOP SHEET + TWO PILLOWCASES



230cm x 280cm
90,55" x 110,24"

bed cover



240cm x 260cm
94,49" x 102,36"

FINISHINGS



ROPE



GREY

TECHNICAL INFORMATION

NOTES



■ A17041X / A17043X



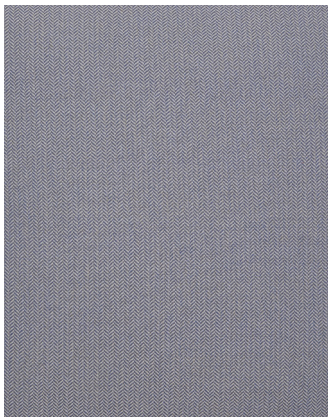
■ A17001X / A17004X



■ A17007X / A17010X



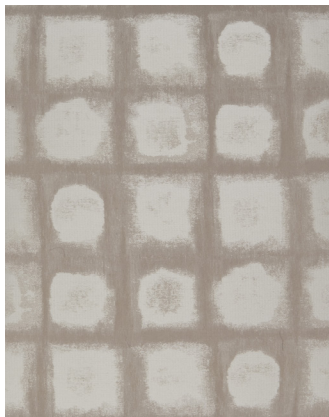
■ A17008X / A17011X



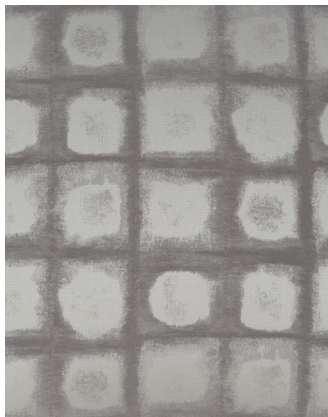
■ A17014X / A17018X



■ A17016X / A17020X



■ A17023X / A17026X



■ A17021X / A17024X



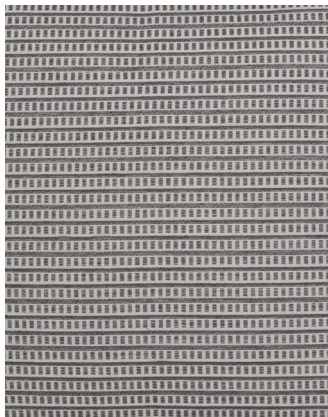
■ A17029X / A17032X



■ A17027X / A17030X



■ A17034X / A17036X



■ A17037X / A17039X



■ A17045X



■ A17049X



■ A17055X



■ A17065X

ALL PICTURES SHOWN ARE FOR ILLUSTRATIVE PURPOSE ONLY. ACTUAL PRODUCT MAY VARY DUE TO PRODUCT ENHANCEMENT.

SCHEMATICS

PILLOW



50cm x 32cm
19,69" x 12,6"

50cm x 50cm
19,69" x 19,69"

FINISHINGS

Finishing



Magic Cube



Dual



Diamond



Magma



Geometric



Spring



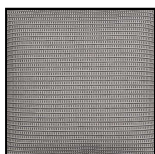
Velvet Plus



Velvet



AMBER



ANTHRACITE



BEIGE



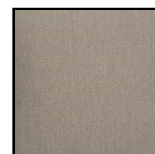
GREY



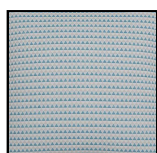
BROWN



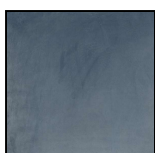
ROSE



TAUPE



TURQUOISE



SEA WATER



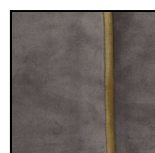
Light blue



OCHER



Lime



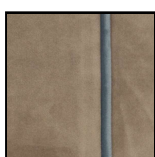
Grigio/Lime



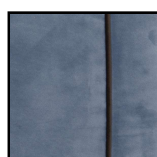
Verdone/tortora



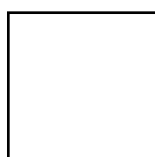
Ambra/Fumo



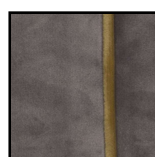
Acqua
Marina/Tortora



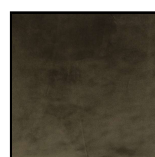
Azzurro/Marrone



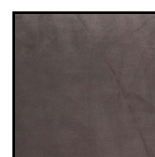
Rosa/Grigio



Lime/Grigio



Verdone



Fumo

TECHNICAL INFORMATION

NOTES

by NATUZZI
DIVANI & DIVANI



■ A17301X



■ A17302X



■ A17303X

ALL PICTURES SHOWN ARE FOR ILLUSTRATIVE PURPOSE ONLY. ACTUAL PRODUCT MAY VARY DUE TO PRODUCT ENHANCEMENT.

SCHEMATICS

Sacco Copripiumino + 2 Federe



H
H

FINISHINGS

Finishing



Grigio Perla

TECHNICAL INFORMATION

NOTES

by NATUZZI
DIVANI & DIVANI



■ A17501X



■ A17502X



■ A17503X



■ A17504X

ALL PICTURES SHOWN ARE FOR ILLUSTRATIVE PURPOSE ONLY. ACTUAL PRODUCT MAY VARY DUE TO PRODUCT ENHANCEMENT.

SCHEMATICS

VASE



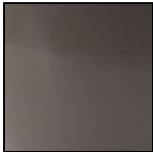
23cm H 24cm
9,06" H 9,45"

FINISHINGS

Finishing



MATT BROWN



GLOSSY TAUPE



GLOSSY YELLOW

TECHNICAL INFORMATION

NOTES



■ A17601X



■ A17602X



■ A17603X



■ A17604X

ALL PICTURES SHOWN ARE FOR ILLUSTRATIVE PURPOSE ONLY. ACTUAL PRODUCT MAY VARY DUE TO PRODUCT ENHANCEMENT.

SCHEMATICS

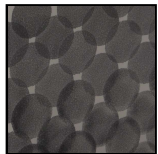
BOX



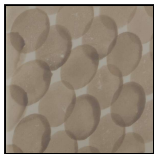
19cm x 19cm H 13cm
7,48" x 7,48" H 5,12"

FINISHINGS

Finishing



GREY WITH CIRCLES



BEIGE WITH CIRCLES

TECHNICAL INFORMATION

NOTES

by NATUZZI
DIVANI & DIVANI



■ A17701X



■ A17702X



■ A17703X



■ A17704X

ALL PICTURES SHOWN ARE FOR ILLUSTRATIVE PURPOSE ONLY. ACTUAL PRODUCT MAY VARY DUE TO PRODUCT ENHANCEMENT.

SCHEMATICS

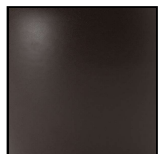
DISK



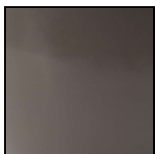
36cm H 8cm
14,17" H 3,15"

FINISHINGS

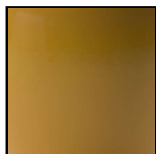
Finishing



MATT BROWN



GLOSSY TAUPE



GLOSSY YELLOW

TECHNICAL INFORMATION

NOTES

by NATUZZI
DIVANI & DIVANI



■ A17902X • Primavera by Antonio Pasciuti



■ A17901X • Fichi di Puglia by Antonio Pasciuti

SCHEMATICS

PICTURE



50cm x 60cm
19,69" x 23,62"

70cm x 70cm
27,56" x 27,56"

FINISHINGS

TECHNICAL INFORMATION

NOTES

by NATUZZI
DIVANI & DIVANI



■ A18001X



■ A18002X

SCHEMATICS

VASE



13cm x 13cm H 13,5cm
5,12" x 5,12" H 5,31"

FINISHINGS

Finishing



GREEN



OCHER

TECHNICAL INFORMATION

NOTES

by NATUZZI
DIVANI & DIVANI



■ A18101X



■ A18101X

ALL PICTURES SHOWN ARE FOR ILLUSTRATIVE PURPOSE ONLY. ACTUAL PRODUCT MAY VARY DUE TO PRODUCT ENHANCEMENT.

SCHEMATICS

VASE



26cm x 26cm H 9,4cm
10,24" x 10,24" H 3,7"

FINISHINGS

Finishing



Light blue

TECHNICAL INFORMATION

NOTES



■ A18201X

ALL PICTURES SHOWN ARE FOR ILLUSTRATIVE PURPOSE ONLY. ACTUAL PRODUCT MAY VARY DUE TO PRODUCT ENHANCEMENT.

SCHEMATICS

VASE



6,5cm x 6,5cm H 20cm
2,56" x 2,56" H 7,87"

FINISHINGS

Finishing



WHITE

TECHNICAL INFORMATION

NOTES

by NATUZZI
DIVANI & DIVANI



■ A18301X



■ A18301X

ALL PICTURES SHOWN ARE FOR ILLUSTRATIVE PURPOSE ONLY. ACTUAL PRODUCT MAY VARY DUE TO PRODUCT ENHANCEMENT.

SCHEMATICS

PLATE



51cm x 51cm H 6cm
20,08" x 20,08" H 2,36"

FINISHINGS

Finishing



YELLOW

TECHNICAL INFORMATION

NOTES



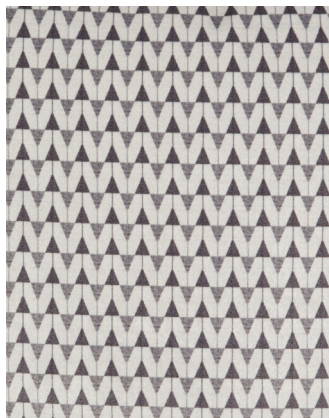
■ A18517X / A18536X



■ A18519X / A18538X



■ A18518X / A18537X



■ A18502X / A18521X



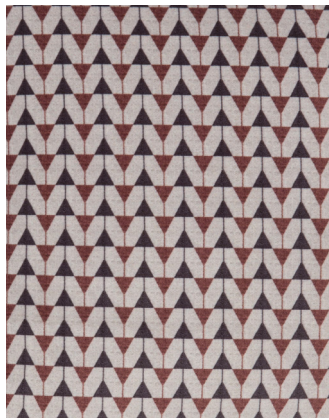
■ A18509X / A18528X



■ A18511X / A18530X



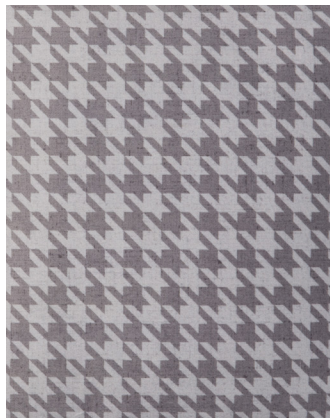
■ A18510X / A18529X



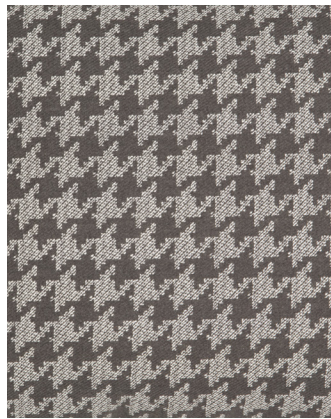
■ A18501X / A18520X



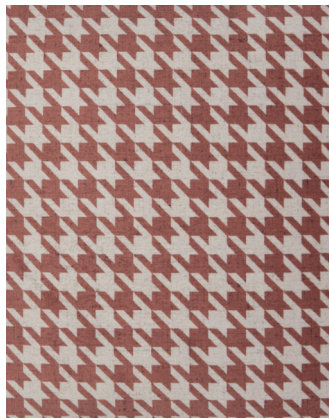
■ A18504X / A18523X



■ A18506X / A18525X



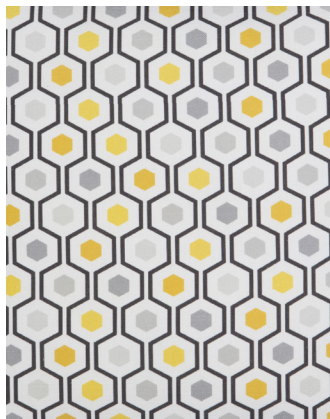
■ A18503X / A18522X



■ A18505X / A18524X



■ A18514X / A18533X



■ A18516X / A18535X



■ A18513X / A18532X



■ A18515X / A18534X

ALL PICTURES SHOWN ARE FOR ILLUSTRATIVE PURPOSE ONLY. ACTUAL PRODUCT MAY VARY DUE TO PRODUCT ENHANCEMENT.

SCHEMATICS

PILLOW

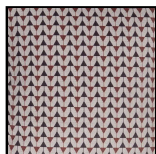


32cm x 42cm
12,6" x 16,54"

42cm x 42cm
16,54" x 16,54"

FINISHINGS

Finishing



JACQUARD ROSSO



PIED DE POULE
RED



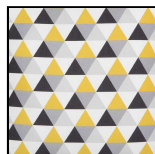
FANTASIA
GEOMETRICA BLUE



FANTASIA
GEOMETRICA RED



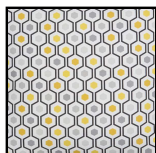
FANTASIA
GEOMETRICA
GREEN



ROMBI GIALLI



LIMONE



PICCOLI SCUDI
GIALLI



OPTICAL

TECHNICAL INFORMATION

NOTES

by NATUZZI
DIVANI & DIVANI



■ A18609X / A18601X (6 pcs)



■ A18612X / A18604X (6 pcs)



■ A18610X / A18602X (6 pcs)



■ A18611X / A18603X (6 pcs)

ALL PICTURES SHOWN ARE FOR ILLUSTRATIVE PURPOSE ONLY. ACTUAL PRODUCT MAY VARY DUE TO PRODUCT ENHANCEMENT.

SCHEMATICS

PROFUMO



FINISHINGS

Finishing



AMBRA D'ARABIA



VANIGLIA E
PATCHOULLI



ARIA DI MARE



FIORI DEL
DESERTO

TECHNICAL INFORMATION

NOTES

by NATUZZI
DIVANI & DIVANI



■ A18702X



■ A18701X



■ A18704X



■ A18703X

ALL PICTURES SHOWN ARE FOR ILLUSTRATIVE PURPOSE ONLY. ACTUAL PRODUCT MAY VARY DUE TO PRODUCT ENHANCEMENT.

SCHEMATICS

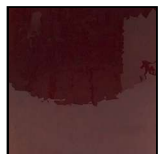
VASE



21cm x 21cm H 30,6cm
8,27" x 8,27" H 12,05"

FINISHINGS

Finishing



ROSSO FIAMMA

TECHNICAL INFORMATION

NOTES

by NATUZZI
DIVANI & DIVANI



■ A18801X



■ A18802X

SCHEMATICS

VASE



28cm x 28cm H 19cm
11,02" x 11,02" H 7,48"

FINISHINGS

Finishing



ROSSO FIAMMA

TECHNICAL INFORMATION

NOTES

by NATUZZI
DIVANI & DIVANI



ALL PICTURES SHOWN ARE FOR ILLUSTRATIVE PURPOSE ONLY. ACTUAL PRODUCT MAY VARY DUE TO PRODUCT ENHANCEMENT.

SCHEMATICS

VASE



29,5cm x 16cm H 32,3cm
11,61" x 6,3" H 12,72"

FINISHINGS

Finishing



WHITE

TECHNICAL INFORMATION

NOTES



■ A19901X

ALL PICTURES SHOWN ARE FOR ILLUSTRATIVE PURPOSE ONLY. ACTUAL PRODUCT MAY VARY DUE TO PRODUCT ENHANCEMENT.

SCHEMATICS

VASE



19,3cm x 8cm H 38cm
7,6" x 3,15" H 14,96"

FINISHINGS

Finishing



YELLOW

TECHNICAL INFORMATION

NOTES



■ A20601X

ALL PICTURES SHOWN ARE FOR ILLUSTRATIVE PURPOSE ONLY. ACTUAL PRODUCT MAY VARY DUE TO PRODUCT ENHANCEMENT.

SCHEMATICS

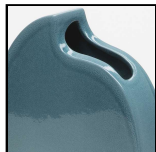
VASE



22cm x 6,4cm H 35cm
8,66" x 2,52" H 13,78"

FINISHINGS

Finishing



BLUE

TECHNICAL INFORMATION

NOTES

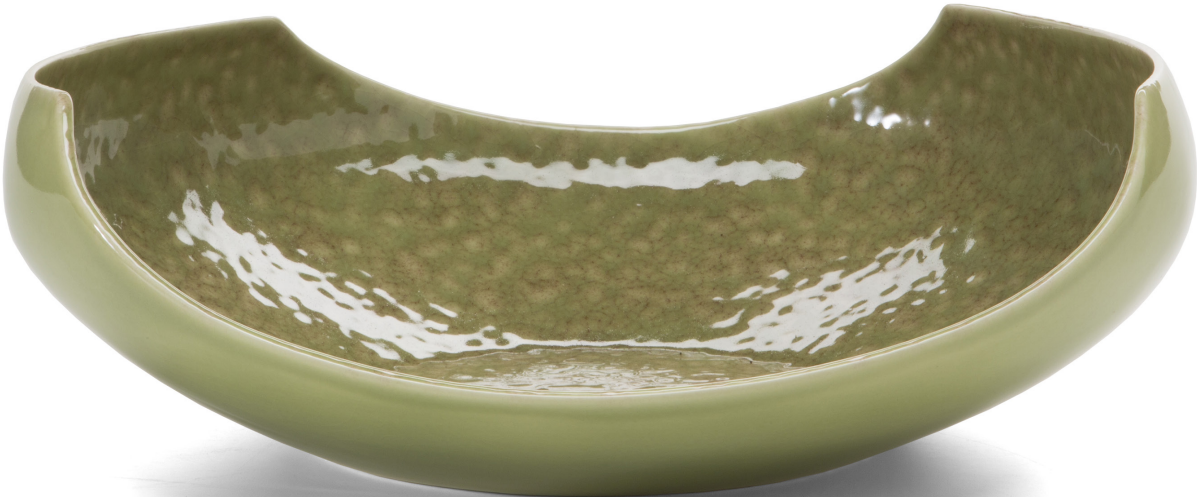
by NATUZZI
DIVANI & DIVANI



■ A20803X



■ A20802X



■ A20801X

ALL PICTURES SHOWN ARE FOR ILLUSTRATIVE PURPOSE ONLY. ACTUAL PRODUCT MAY VARY DUE TO PRODUCT ENHANCEMENT.

SCHEMATICS

BOWL



29cm x 24cm H 9cm
11,42" x 9,45" H 3,54"

33cm x 28,5cm H 11cm
12,99" x 11,22" H 4,33"

41,5cm x 38,5cm H 12cm
16,34" x 15,16" H 4,72"

FINISHINGS

Finishing



GREEN

TECHNICAL INFORMATION

NOTES

by NATUZZI
DIVANI & DIVANI



■ A21101X



■ A21101X

ALL PICTURES SHOWN ARE FOR ILLUSTRATIVE PURPOSE ONLY. ACTUAL PRODUCT MAY VARY DUE TO PRODUCT ENHANCEMENT.

SCHEMATICS

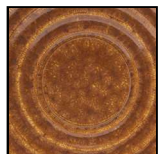
PLATE



58cm x 58cm H 8cm
22,83" x 22,83" H 3,15"

FINISHINGS

Finishing



OCHER

TECHNICAL INFORMATION

NOTES

by NATUZZI
DIVANI & DIVANI



■ Detail



■ A21501X



■ A21502X



■ A21503X

ALL PICTURES SHOWN ARE FOR ILLUSTRATIVE PURPOSE ONLY. ACTUAL PRODUCT MAY VARY DUE TO PRODUCT ENHANCEMENT.

SCHEMATICS

VASE



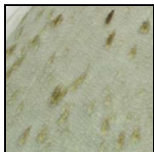
23cm x 23cm H 48,5cm
9,06" x 9,06" H 19,09"

FINISHINGS

Finishing



BLUE



SALVIA

TECHNICAL INFORMATION

NOTES

DIVANI & DIVANI by NATUZZI



■ A21701X



■ A21702X

ALL PICTURES SHOWN ARE FOR ILLUSTRATIVE PURPOSE ONLY. ACTUAL PRODUCT MAY VARY DUE TO PRODUCT ENHANCEMENT.

SCHEMATICS

VASE



18,7cm x 18,7cm H 18cm

7,36" x 7,36" H 7,09"

22,4cm x 22,4cm H 36cm

8,82" x 8,82" H 14,17"

FINISHINGS

Finishing



NIGHT BLUE



CREAM BLUE

TECHNICAL INFORMATION

NOTES

by NATUZZI
DIVANI & DIVANI



■ B01503X / B01509X Large version (draft image)



■ B01502X / B01508X Small version (draft image)



■ B01506X / B01512X (draft image)



■ B01507X / B01513X (draft image)



■ B01505X / B01511X Large version (draft image)

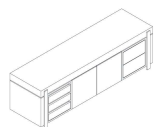


■ B01504X / B01510X Small version (draft image)

ALL PICTURES SHOWN ARE FOR ILLUSTRATIVE PURPOSE ONLY. ACTUAL PRODUCT MAY VARY DUE TO PRODUCT ENHANCEMENT.

SCHEMATICS

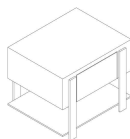
TV HOLDER UNIT



52cm x 180cm H 55cm
20,47" x 70,87" H 21,65"

52cm x 220cm H 55cm
20,47" x 86,61" H 21,65"

BEDSIDE TABLE



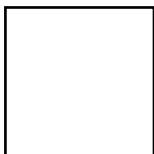
46cm x 55cm H 55cm
18,11" x 21,65" H 21,65"

FINISHINGS

Frame finishing

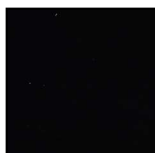


BROWN
ASH-BRUSHED
BRASS



Frassino
Biondo/Antracite

Feet finishing

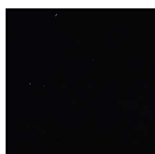


GLOSSY LACQUER
COFFEE

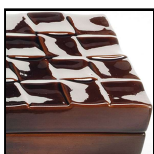


CARAMEL

Top finishing



GLOSSY LACQUER
COFFEE



CARAMEL

TECHNICAL INFORMATION

Desy program with an imposing and rigorous look stands out for its square shapes and the elegant mix of wood, glass and metal. An harmonious union that will embellish the living rooms that will host it.

TECHNICAL FEATURES

Structure: powder coated steel in Brushed Bronze or Embossed Anthracite finish

Container and Top: Brown or Blonde Ash veneered MDF with internal shelf. Internal lacquered coffee drawers; Drawer closing system with amortized guides;

Doors: glossy lacquered glass in Coffee or Caramel finishes with "Push to Open" system opening.

NOTES



■ CE032311431 (CE032317031 fabric)



■ CE032311431



■ CE032311431



■ CE032311431

ALL PICTURES SHOWN ARE FOR ILLUSTRATIVE PURPOSE ONLY. ACTUAL PRODUCT MAY VARY DUE TO PRODUCT ENHANCEMENT.

SCHEMATICS

WITHOUT ARMS

49cm x 58cm H 86cm

19,29" x 22,83" H 33,86"

FINISHINGS

Frame finishing



MATT BLACK

TECHNICAL INFORMATION

Designer: Manzoni & Tapinassi

Slancio dining chair, characterized by slender and harmonious shapes, is designed by Manzoni & Tapinassi. The design project is enhanced by the combination of refined materials: leather or fabric upholstered parts and the legs in black painted metal with small bowl in bronze colored metallic paint.

TECHNICAL FEATURES

Covering: leather art. Le Mans / Fabric art. Brezza

Legs: Laquered matt black metal / bronze

NOTES



■ CE040037049



■ CE040037049



■ CE042311449



■ CE042311449

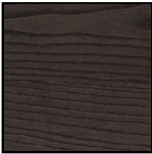
ALL PICTURES SHOWN ARE FOR ILLUSTRATIVE PURPOSE ONLY. ACTUAL PRODUCT MAY VARY DUE TO PRODUCT ENHANCEMENT.

SCHEMATICS

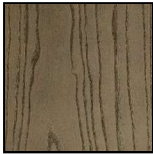
WITH ARMS	WITHOUT ARMS
57cm x 61cm H 82cm 22,44" x 24,02" H 32,28"	55cm x 61cm H 82cm 21,65" x 24,02" H 32,28"

FINISHINGS

Frame finishing



Brown Ash



Blonde Ash

TECHNICAL INFORMATION

Designer: Mauro Lipparini

The Plettro chair is made of solid wood and covered in leather or fabric. Designed by the architect Mauro Lipparini, to ensure maximum comfort, with or without armrests, it has a comfortable padded seat. Ideal for any corner of the home or office, it's a piece of design that fills the interior with style.

TECHNICAL FEATURES

Covering: leather art. Le Mans / Fabric art. Brezza

Legs: Brown and Blonde Ash

NOTES



■ CE050031400 (CE050037000 fabric)



■ CE050031400



■ CE050031400



■ CE050031400

ALL PICTURES SHOWN ARE FOR ILLUSTRATIVE PURPOSE ONLY. ACTUAL PRODUCT MAY VARY DUE TO PRODUCT ENHANCEMENT.

SCHEMATICS

WITH ARMS

74cm x 72cm H 94cm
29,13" x 28,35" H 37,01"

FINISHINGS

TECHNICAL INFORMATION

Why Dining chair is made of covered wood in leather or fabric. Designed by Natuzzi design center, to ensure maximum comfort with its generous padded seat.

Ideal combined with Race Dining Table, it's a piece of design that fills the interior with style. Piping in different color of same fabric available only with fabric covering.

TECHNICAL FEATURES

Covering: Leather art. Le Mans / Fabric art. Brezza (Optional piping in fabric)

NOTES

by NATUZZI
DIVANI & DIVANI



■ E22228X / E22252X



■ E22227X / E22251X



■ E22233X / E22257X



■ E22234X / E22258X



■ E22235X / E22259X



■ E22236X / E22260X



■ E22230X / E22254X



■ E22232X / E22256X

ALL PICTURES SHOWN ARE FOR ILLUSTRATIVE PURPOSE ONLY. ACTUAL PRODUCT MAY VARY DUE TO PRODUCT ENHANCEMENT.

SCHEMATICS

RECTANGULAR CORNER

50cm x 80cm H 40cm
19,69" x 31,5" H 15,75"

RECTANGULAR CENTRAL



60cm x 120cm H 35cm
23,62" x 47,24" H 13,78"

RECTANGULAR ACCENT



40cm x 50cm H 50cm
15,75" x 19,69" H 19,69"

ROUND CORNER



80cm x 80cm H 35cm
31,5" x 31,5" H 13,78"

ROUND CENTRAL



100cm x 100cm H 35cm
39,37" x 39,37" H 13,78"

FINISHINGS

Frame finishing

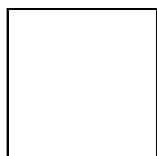


Brown Ash



Blonde Ash

Top finishing



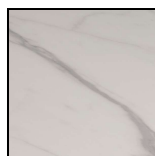
WHITE



Light blue



Lead Gray



Statuario



Brown Ash



Blonde Ash

TECHNICAL INFORMATION

Designer: Mauro Lipparini

The program Plettro is completed by a series of coffee tables and side tables with lacquered tops made of wood and ceramic. All the products with their particular shape, were designed by architect Mauro Lipparini.

RECTANGULAR CENTRAL / CORNER / ACCENT:

CENTRAL: top in Ceramic Arabescato Statuario or Lacquered White, base in Brown Ash.

CORNER: top in Ceramic Arabescato Statuario, base in Brown Ash.

ACCENT: top in Brown Ash or Medium Grey Laquered, base in Brown Ash.

ASSIMETRIC CENTRAL / ROUND CORNER:

CENTRAL: top in Ceramic Arabescato Statuario or Blonde Ash, base in Blonde Ash.

CORNER: top in Blonde Ash or Sky Blue Laquered, base in Blonde Ash.

NOTES



■ E22604X / E22608X



■ E22604X / E22608X



■ E22603X / E22607X



■ E22603X / E22607X

ALL PICTURES SHOWN ARE FOR ILLUSTRATIVE PURPOSE ONLY. ACTUAL PRODUCT MAY VARY DUE TO PRODUCT ENHANCEMENT.

SCHEMATICS

RECTANGULAR CENTRAL



60cm x 120cm H 30cm
23,62" x 47,24" H 11,81"

ROUND CORNER



58cm x 58cm H 53cm
22,83" x 22,83" H 20,87"

FINISHINGS

Frame finishing



Mat Black/Bronze

Top finishing



ANTHRACITE



Blonde Ash

TECHNICAL INFORMATION

Designer: Manzoni & Tapinassi

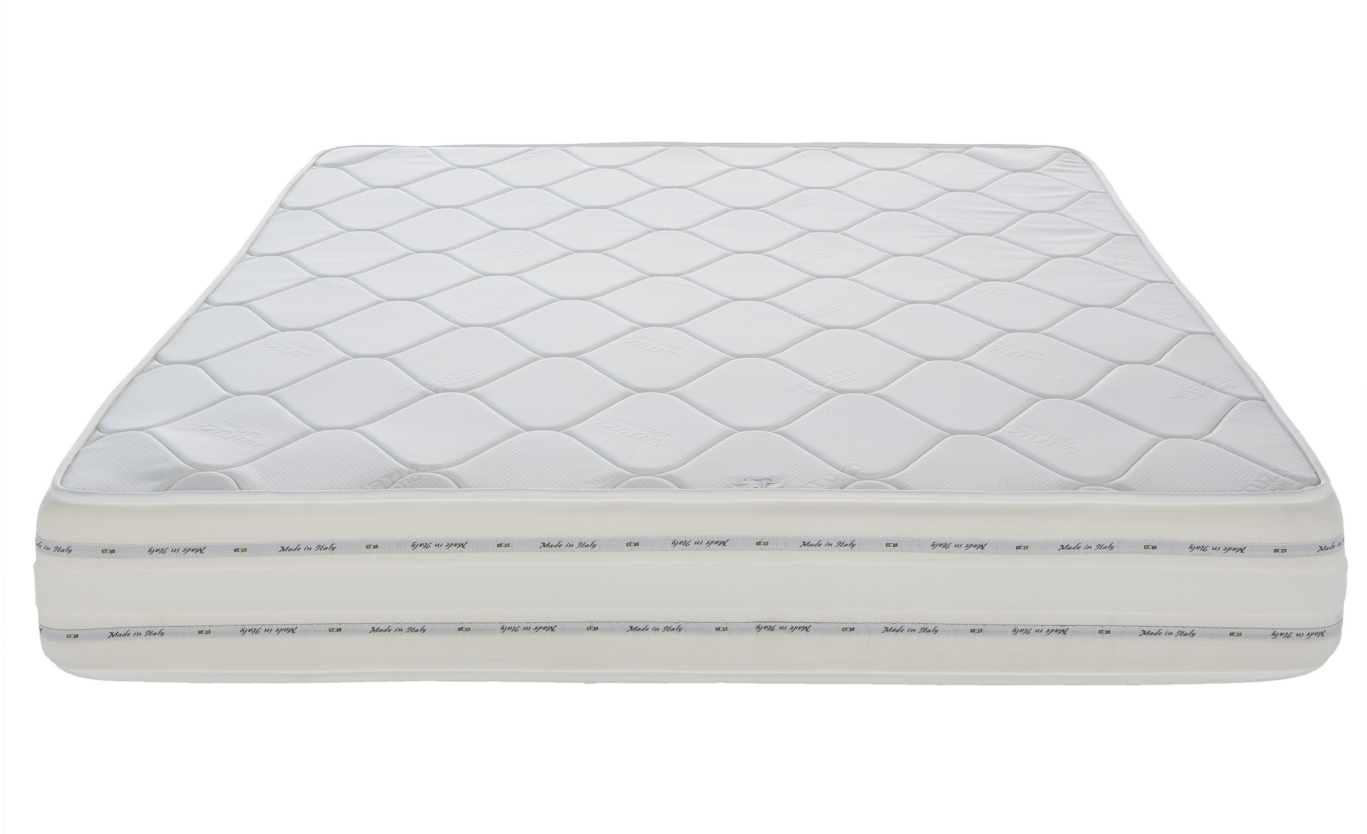
Slancio Coffee tables, characterized by slender and harmonious shapes, is designed by Manzoni & Tapinassi. The design project is enhanced by the combination of refined materials: the wood top in ash blonde or laquered anthracite and the legs in black painted metal with small bowl in bronze colored metallic paint.

TECHNICAL FEATURES

CENTRAL: top veneered in Blonde Ash, base in Lacquered Matt Black Metal / Bronze

SIDE: Anthracite Laquered base in Lacquered Matt Black Metal / Bronze

NOTES



- F01403X 180 x 200 x H23 cm
- F01405X 193 x 200 x H23 cm



- F01401X 160 x 200 x H23 cm
- F01406X 152 x 200 x H23 cm

SCHEMATICS

MATERASSO GOMMA E MEMORY

152cm x 200cm H 23cm
59,84" x 78,74" H 9,06"

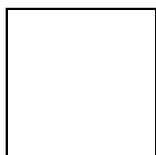
160cm x 200cm H 23cm
62,99" x 78,74" H 9,06"

180cm x 200cm H 23cm
70,87" x 78,74" H 9,06"

193cm x 200cm H 23cm
75,98" x 78,74" H 9,06"

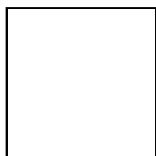
FINISHINGS

Finitura struttura esterna



WHITE

Finitura struttura interna



WHITE

TECHNICAL INFORMATION

Natuzzi Editions mattresses are 100% Made in Italy in foam/memory and fire retardant certified.

Available in 4 different size, able to fit all Natuzzi Editions meshes and Beds programs.

Provided with polyester cover.

NOTES

by NATUZZI
DIVANI & DIVANI



■ G22603X / G22605X



■ G22603X / G22605X



■ G22603X / G22605X

ALL PICTURES SHOWN ARE FOR ILLUSTRATIVE PURPOSE ONLY. ACTUAL PRODUCT MAY VARY DUE TO PRODUCT ENHANCEMENT.

SCHEMATICS

RECTANGULAR Cajón



50cm x 130cm H 75cm
19,69" x 51,18" H 29,53"

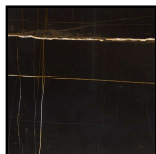
FINISHINGS

Frame finishing



Mat Black/Bronze

Top finishing



SAHARA NOIR

TECHNICAL INFORMATION

Designer: Manzoni & Tapinassi

Slancio Consolle, characterized by slender and harmonious shapes, is designed by Manzoni & Tapinassi. The design project is enhanced by the combination of refined materials: the black polished ceramic top with gold veins and the legs in black painted metal with small bowl in bronze colored metallic paint.

TECHNICAL FEATURES

Top: Ceramic Sahara Noire

Legs: Matt Black Laquered Metal / Bronze

Drawer: Anthracite Laquered

NOTES



■ J110PX0 (1 pcs) / K110PX0 (20 pcs) Leather care kit



■ J110MX0 (1 pcs) / K110MX0 (20 pcs) Dreamfibre and textile care kit

SCHEMATICS



H
H

40cm x 54cm H 18cm

15,75" x 21,26" H 7,09"

FINISHINGS

TECHNICAL INFORMATION

NOTES



■ M832001XOF / M832001XDD (draft image)



■ M832005XOF / M832005XDD (draft image)



■ M832003XOF / M832003XDD
Left side (draft image)



■ M832006XOF / M832006XDD
Right side (draft image)



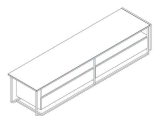
■ M832007XOF / M832007XDD
Left side (draft image)



■ M832002XOF / M832002XDD
Right side (draft image)

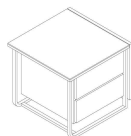
SCHEMATICS

MOBILE TV



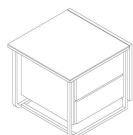
50cm x 200cm H 45cm
19,69" x 78,74" H 17,72"

BEDSIDE TABLE LEFT



50cm x 50cm H 45cm
19,69" x 19,69" H 17,72"

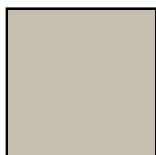
BEDSIDE TABLE RIGHT



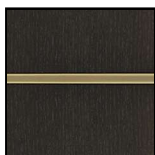
50cm x 50cm H 45cm
19,69" x 19,69" H 17,72"

FINISHINGS

Frame finishing

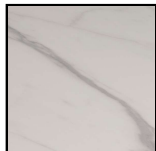


BEIGE GREY



Frassino
Marrone/Champagne

Feet finishing



Statuario

TECHNICAL INFORMATION

Como design project enhances a combination of refined materials: wooden veneered or laquered drawer and panels hosted in a metal structure with a ceramic top.

TECHNICAL FEATURES

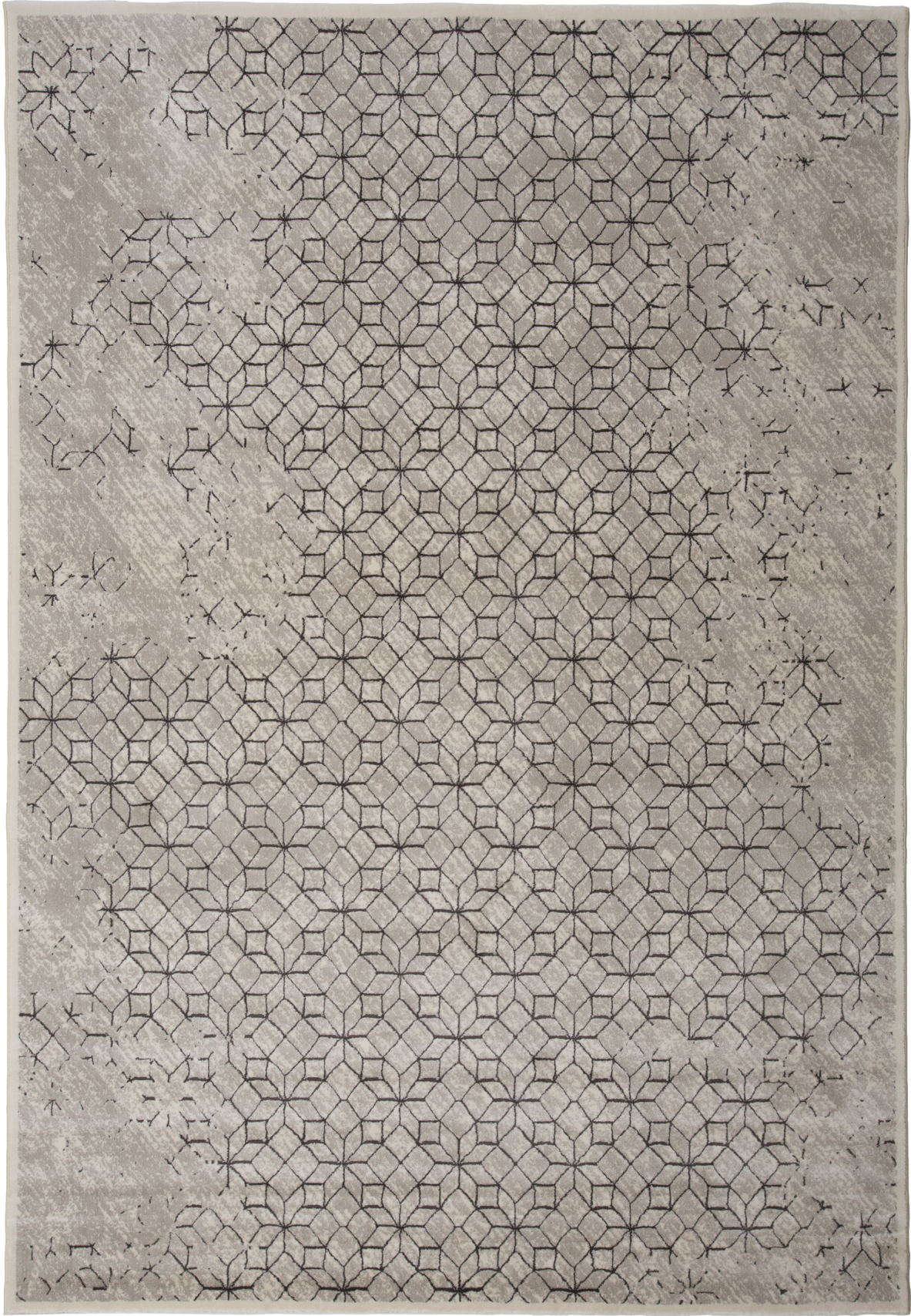
Structure: Curved and welded tubular in the two finishes Champagne or Beige Grey;

Side Panels and Drawers: Veneered MDF in Brown Ash or lacquered Grey Beige. Coffee lacquered internal drawers; "Push to Open" system opening for drawers;

Top: Ceramic Arabescato Statuario with marble effect.

NOTES

by NATUZZI
DIVANI & DIVANI



ALL PICTURES SHOWN ARE FOR ILLUSTRATIVE PURPOSE ONLY. ACTUAL PRODUCT MAY VARY DUE TO PRODUCT ENHANCEMENT.

■ R864SXX • Anthracite 200 x 290 cm / 79 x 114 in

SCHEMATICS

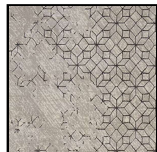
RECTANGULAR



200cm x 290cm
78,74" x 114,17"

FINISHINGS

Color



ANTHRACITE



GREY



GOLD



BRICK RED

TECHNICAL INFORMATION

Patina combines texture and colour in delicate line work on a soft background; more it is a perfect blend of high quality polyester and hspp yarns. The vivid and playful colours bring depth and warmth to the vintage yet contemporary designs.

PRODUCT DETAILS

Composition: 60% HSPP – 40% Polyester

Pile Height: 9,5 mm – ½inch

Care: Professional dry cleaning only

Made in Belgium

NOTES



■ R865SBX • Blue

ALL PICTURES SHOWN ARE FOR ILLUSTRATIVE PURPOSE ONLY. ACTUAL PRODUCT MAY VARY DUE TO PRODUCT ENHANCEMENT.

SCHEMATICS

RECTANGULAR



200cm x 300cm
78,74" x 118,11"

FINISHINGS

Color



ANTHRACITE



YELLOW



GREY

TECHNICAL INFORMATION

This handmade Flatweave rug is made of pure high quality wool and designed to fit into all types of interiors because of the neutral color with a warm accent as finishing touch. The human touch makes each item a unique piece as a result of being handcrafted. Therefore the slight differences and deviations in colors you may notice should be regarded as a benefit from this work and not as imperfections.

PRODUCT DETAILS

Rug Typology: Handwoven. Flatweave rugs are a type of rug that is intentionally woven to have no pile in order to give it a low profile. Hence, the "flat" in flatweave

Composition: 70% wool, 30% cotton

Pile Height: Flatweave

Care: Professional dry cleaning only

Made in India

NOTES

by NATUZZI
DIVANI & DIVANI



■ R86904X • Aubergine 200 x 300 cm / 79 x 118 in

ALL PICTURES SHOWN ARE FOR ILLUSTRATIVE PURPOSE ONLY. ACTUAL PRODUCT MAY VARY DUE TO PRODUCT ENHANCEMENT.

SCHEMATICS

RECTANGULAR



300cm x 200cm
118,11" x 78,74"

FINISHINGS

Color



COFFEE



GREY



Aubergine

TECHNICAL INFORMATION

Origins takes you back in time to the roots of rug making, when tapestry was a form of traditional textile art. Tapestry consists of a weft-faced weave in which all warp threads are hidden in the completed work. The depth and relief are achieved by the distinctive combination of weft and warp.

Total Composition: 70% Cotton, 15% Wool, 15% Jute

Dimensions: 200 x 300 cm - 79 x 118 inch

Made in Belgium

NOTES

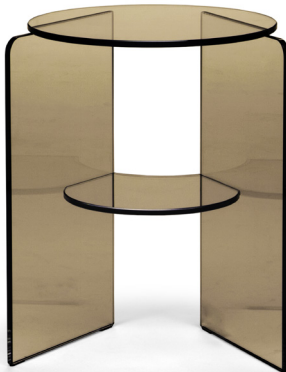
by NATUZZI
DIVANI & DIVANI



■ T041005XOF / T041005XDD
(draft image - projectual review)



■ T041008XOF / T041008XDD



■ T041011XOF / T041011XDD



■ T041006XOF / T041006XDD
(draft image - projectual review)



■ T041009XOF / T041009XDD



■ T041012XOF / T041012XDD



■ T041004XOF / T041004XDD
(draft image - projectual review)



■ T041007XOF / T041007XDD



■ T041010XOF / T041010XDD

SCHEMATICS

ROUND CENTRAL

70cm H 41cm
27,56" H 16,14"

90cm H 31cm
35,43" H 12,2"

ROUND ACCENT

40cm H 51cm
15,75" H 20,08"

FINISHINGS

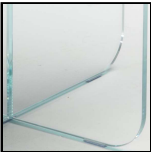
Frame finishing



BRONZE



SMOKE



Extra Clear Glass

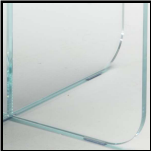
Top finishing



BRONZE



SMOKE



Extra Clear Glass

TECHNICAL INFORMATION

The play of shapes and transparencies makes the Pepe coffee table unique in its kind. Skilful joints and rounded shapes give life to an intriguing and functional project. The different compositions and finishes make Pepe a very versatile element.

TECHNICAL FEATURES

Base / Top: Tempered glass with UV glued elements in Smoked, Transparent and Bronze finishes in 3 different sizes to combine with each other.

NOTES

by NATUZZI
DIVANI & DIVANI



■ T042006XOF + T042003XOF / T042006XDD + T042003XDD



■ T042006XOF / T042006XDD



■ T042002XOF / T042002XDD



■ T042005XOF / T042005XDD



■ T042001XOF / T042001XDD



■ T042004XOF / T042004XDD

ALL PICTURES SHOWN ARE FOR ILLUSTRATIVE PURPOSE ONLY. ACTUAL PRODUCT MAY VARY DUE TO PRODUCT ENHANCEMENT.

SCHEMATICS

SQUARE CENTRAL



90cm x 90cm H 32cm
35,43" x 35,43" H 12,6"

ROUND ACCENT



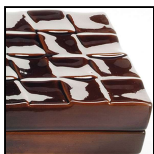
56cm H 50cm
22,05" H 19,69"

FINISHINGS

Frame finishing



BROWN



CARAMEL



Grigio Ferro

Top finishing



WHITE/ANTHRACITE



Brown Ash



Blonde Ash

TECHNICAL INFORMATION

Designer: Claudio Bellini

Wire coffee table, designed by Claudio Bellini combines a top made with a compact marble agglomerate layer, a refined but functional and resistant material, with a metal powder coated base makes it suitable for living room.

TECHNICAL FEATURES

Base: Drawn steel structure with powder coated tubular top support part in Caramel, Brown and Dusty Grey matt finishes.

Top: Veneered MDF in two wood finishes Ash Blonde or Brown or in agglomerates of compact marble agglomerate in Grey finishing.

NOTES

by NATUZZI
DIVANI & DIVANI



■ T043001XOF / T043001XDD



■ T043004XOF / T043004XDD



■ T043005XOF / T043005XDD



■ T043003XOF / T043003XDD



■ T043006XOF / T043006XDD



■ T043002XOF / T043002XDD

ALL PICTURES SHOWN ARE FOR ILLUSTRATIVE PURPOSE ONLY. ACTUAL PRODUCT MAY VARY DUE TO PRODUCT ENHANCEMENT.

SCHEMATICS

SQUARE CENTRAL

90cm x 90cm H 32cm
35,43" x 35,43" H 12,6"

SQUARE ACCENT

58cm x 58cm H 40cm
22,83" x 22,83" H 15,75"

60cm x 60cm H 40cm
23,62" x 23,62" H 15,75"

RECTANGULAR CENTRAL

58cm x 118cm H 32cm
22,83" x 46,46" H 12,6"

FINISHINGS

Frame finishing



DARK GREY

Top finishing



CALACATTA GOLD



Brown Ash



Blonde Ash

TECHNICAL INFORMATION

Designer: Mauro Lipparini

Low Coffee table, characterized by slender and harmonious shapes, is designed by Mauro Lipparini. The design project is enhanced by the combination of different materials: the calacatta gold ceramic or wooden veneered top and the legs in golden grey metal.

TECHNICAL FEATUERS

Base: Round section tubular metal structure, curved and welded and powder coated.

Top: Veneered MDF in two wood finishes Ash Blonde or Brown or MDF coupled with compact ceramic Calacatta Gold finishing.

NOTES

by NATUZZI
DIVANI & DIVANI



■ T044001XOF / T044001XDD Small version • T044003XOF / T044003XDD Large version (draft image)



■ T044002XOF / T044002XDD Small version • T044004XOF / T044004XDD Large version (draft image)

SCHEMATICS

ROUND FIXED



140cm H 75cm

55,12" H 29,53"

160cm H 75cm

62,99" H 29,53"

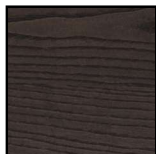
FINISHINGS

Frame finishing



Extra Clear Glass

Top finishing



Brown Ash



Blonde Ash

TECHNICAL INFORMATION

Designer: Claudio Bellini

Different materials come together to create the Gira table. Round and imposing, lightened to the view from the transparent base, it's the ideal table to enrich a dining or living room by combining design and functionality.

TECHNICAL FEATURES

Base: very thick tempered glass with the two elements glued with UV process;

Top: MDF veneered in Blonde or Brown Ash with matt lacquered undertop;

Lazy Susan (Optional): Mirrored Glass in two finishings depending on top finishing.

NOTES

by NATUZZI
DIVANI & DIVANI



■ T047004XOF / T047004XDD
■ T047001XOF / T047001XDD



■ T047001XOF / T047001XDD



■ T047003XOF / T047003XDD



■ T047002XOF / T047002XDD



■ T047004XOF / T047004XDD



■ TT047006XOF / T047006XDD



■ T047005XOF / T047005XDD

ALL PICTURES SHOWN ARE FOR ILLUSTRATIVE PURPOSE ONLY. ACTUAL PRODUCT MAY VARY DUE TO PRODUCT ENHANCEMENT.

SCHEMATICS

MULTIFORM CENTRAL



90cm H 34cm
35,43" H 13,39"

MULTIFORM MULTIFUNCTION



50cm H 50cm
19,69" H 19,69"

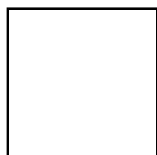
MULTIFORM Accent



50cm H 50cm
19,69" H 19,69"

FINISHINGS

Frame finishing



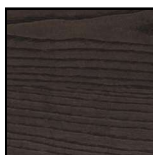
WHITE



ASH

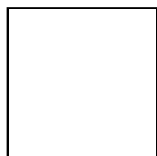


MATT LACQUER
GREY



Brown Ash

Top finishing



WHITE



ASH



GLOSSY LACQUER
GREY



Brown Ash

TECHNICAL INFORMATION

Of immediate visual impact, the Octopus coffee table intrigues for its original shape and the particular joints that make it versatile and always current. In different shapes and sizes, it attributes refinement to furnishing projects.

TECHNICAL FEATURES

Base / Top: Veneered MDF in two wood finishings Natural Ash or Brown or in compact marble agglomerate in Bianchissimo finishing.

NOTES



ALL PICTURES SHOWN ARE FOR ILLUSTRATIVE PURPOSE ONLY. ACTUAL PRODUCT MAY VARY DUE TO PRODUCT ENHANCEMENT.

SCHEMATICS

ROUND CENTRAL



110cm H 35cm
43,31" H 13,78"

FINISHINGS

Frame finishing



CANALETTO
WALNUT

Top finishing



CANALETTO
WALNUT

TECHNICAL INFORMATION

The Merlot table is a creation of globally renowned designer Biagio Cisotti. It's meant to fit in perfectly with modern and urban living spaces

PRODUCT DETAIL

A lateral dent and a central cut make it look elegant and unexpected, also because its legs are connected in a very peculiar manner.

The Merlot table is available in oak.

NOTES



■ T169010 • D85 x H38 cm / D33 x H15 in



■ T169011 • D62 x H53 cm / D24 x H21 in



■ T169002 • D62 x H53 cm / D24 x H21 in



■ T169003 • D42 x H46 cm / D17 x H18 in

ALL PICTURES SHOWN ARE FOR ILLUSTRATIVE PURPOSE ONLY. ACTUAL PRODUCT MAY VARY DUE TO PRODUCT ENHANCEMENT.

SCHEMATICS

ROUND CORNER



62cm H 53cm
24,41" H 20,87"

FINISHINGS

Frame finishing



SMOKED OAK

Top finishing



JAZZ WHITE

TECHNICAL INFORMATION

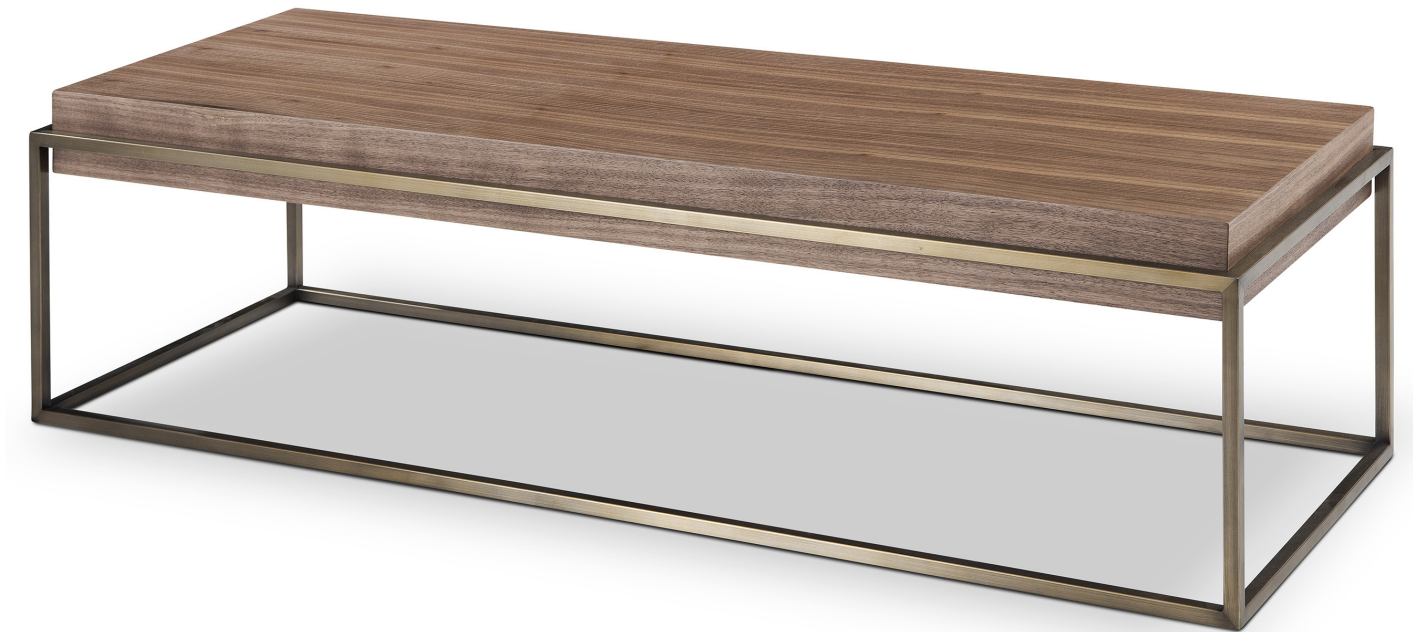
Whether you have space for one or 3, Sole brings an eclectic touch to living room style.

Coffee table Sole comes in 3 sizes (1 central and 2 accent tables) each of which in 4 finishings; legs are always in solid wood.

PRODUCT DETAILS

- Natural Jazz White marble top with smoked oak legs or both legs and top in smoked oak
- Natural Travertine marble top with walnut legs or both legs and top in walnut

NOTES



ALL PICTURES SHOWN ARE FOR ILLUSTRATIVE PURPOSE ONLY. ACTUAL PRODUCT MAY VARY DUE TO PRODUCT ENHANCEMENT.

SCHEMATICS

RECTANGULAR CENTRAL

45cm x 130cm H 36cm
17,72" x 51,18" H 14,17"



FINISHINGS

Frame finishing



BRONZE

Top finishing



CANALETTO
WALNUT

TECHNICAL INFORMATION

Cielo Table's slim frame and top finish make it an easy fit in any style. The slim profile lets you save precious space in smaller living rooms.

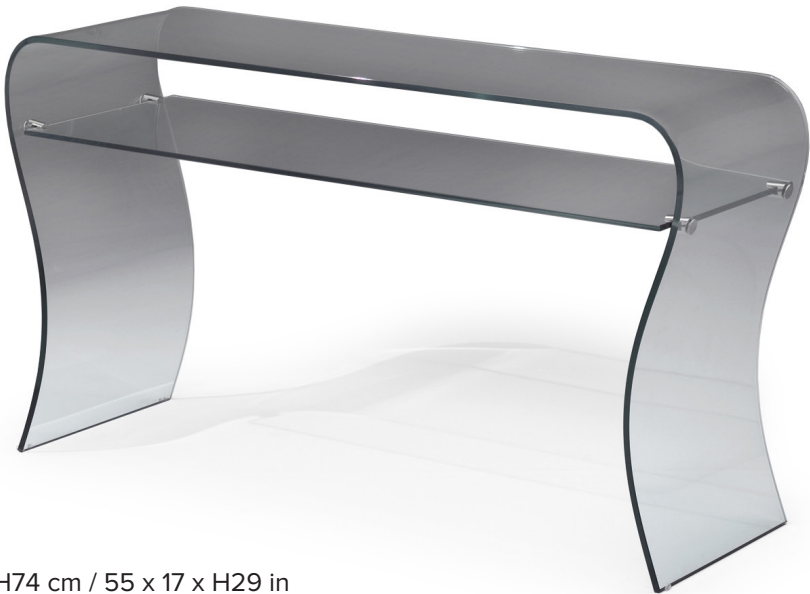
It comes in 4 different sizes: 3 central tables (rectangular, squared and long) and 1 accent table.

PRODUCT DETAILS

Top: Walnut veneer or Smoked Oak venee

Legs: Brushed Yellow Bronze (with walnut top) or Black nickel (smoked oak)

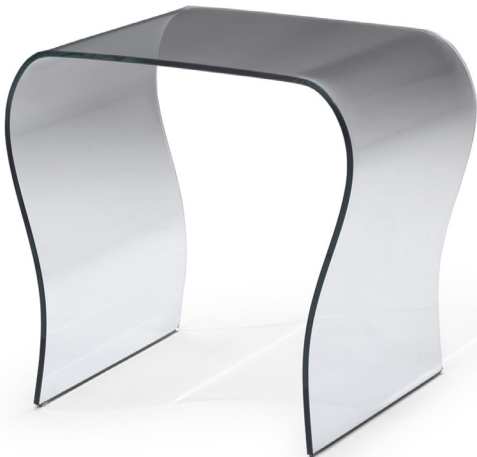
NOTES



■ T18203X • 140 x 42 x H74 cm / 55 x 17 x H29 in



■ T18202X • 120 x 62 x H42 cm / 47x 24 x H17 in

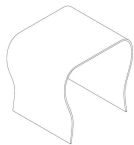


■ T18201X • 60 x 50 x H56 cm / 24 x 20 x H22 in

ALL PICTURES SHOWN ARE FOR ILLUSTRATIVE PURPOSE ONLY. ACTUAL PRODUCT MAY VARY DUE TO PRODUCT ENHANCEMENT.

SCHEMATICS

RECTANGULAR CORNER



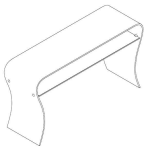
50cm x 60cm H 56cm
19,69" x 23,62" H 22,05"

RECTANGULAR CENTRAL



120cm x 62cm H 42cm
47,24" x 24,41" H 16,54"

RECTANGULAR CONSOLE



140cm x 42cm H 74cm
55,12" x 16,54" H 29,13"

FINISHINGS

Frame finishing



TRANSPARENT

Top finishing



TRANSPARENT

TECHNICAL INFORMATION

Heat forged structure in blue line curved crystal.

Tension-free 12mm thick crystal.

Transparent rubber stopper.

Maximum weight bearing capacity:

- Centre version 45 kg uniformly distributed
- Corner version 60 kg uniformly distributed
- Console 70 kg uniformly distributed.

Number of packages: 1

NOTES



ALL PICTURES SHOWN ARE FOR ILLUSTRATIVE PURPOSE ONLY. ACTUAL PRODUCT MAY VARY DUE TO PRODUCT ENHANCEMENT.

SCHEMATICS

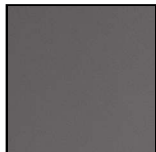
MULTIFUNCTION



26cm x 60cm H 47cm
10,24" x 23,62" H 18,5"

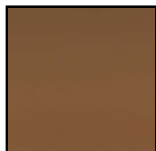
FINISHINGS

Frame finishing



NICKEL

Top finishing



ORANGE

TECHNICAL INFORMATION

Dark brown or grey magazine holder in regenerated leather fiber.

Varnished metal structure, nickel finish.

Round feet in regenerated leather fiber.

Number of boxes: 1

NOTES



■ T18406X



■ T18405X



■ T18408X



■ T18402X



■ T18401X



■ T18404X



■ T18410X



■ T18403X

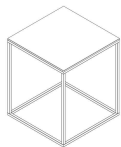


■ T18407X

ALL PICTURES SHOWN ARE FOR ILLUSTRATIVE PURPOSE ONLY. ACTUAL PRODUCT MAY VARY DUE TO PRODUCT ENHANCEMENT.

SCHEMATICS

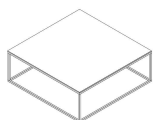
SQUARE CORNER



45cm x 45cm H 53cm
17,72" x 17,72" H 20,87"

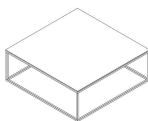
45cm x 45cm H 54cm
17,72" x 17,72" H 21,26"

ROUND CORNER



45cm H 56cm
17,72" H 22,05"

SQUARE CENTRAL



90cm x 90cm H 33cm
35,43" x 35,43" H 12,99"

90cm x 90cm H 34cm
35,43" x 35,43" H 13,39"

ROUND CENTRAL



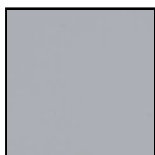
90cm H 33cm
35,43" H 12,99"

FINISHINGS

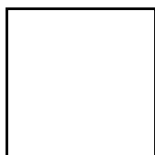
Frame finishing



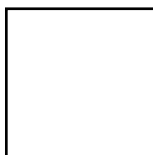
MATT COFFEE



LIGHT GREY



ONICE

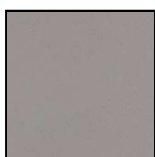


COPACABANA

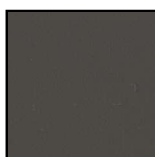
Top finishing



SMOKED OAK



TAUPE



MATT BETON



TECHNICAL INFORMATION

Top in thick extra-clear tempered glass

Structure in tubular metal in glossy chrome; opaque brown-black paint or pewter

Number of packages: 2

Made in Italy

NOTES



ALL PICTURES SHOWN ARE FOR ILLUSTRATIVE PURPOSE ONLY. ACTUAL PRODUCT MAY VARY DUE TO PRODUCT ENHANCEMENT.

SCHEMATICS

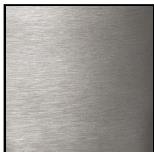
RECTANGULAR CENTRAL



83cm x 101cm H 28cm
32,68" x 39,76" H 11,02"

FINISHINGS

Frame finishing



PEWTER

Top finishing



SMOKED OAK

TECHNICAL INFORMATION

Top in Travertine or bronze Amani grey-brown stone

Base in galvanised nickel steel, brushed and protected with transparent paint.

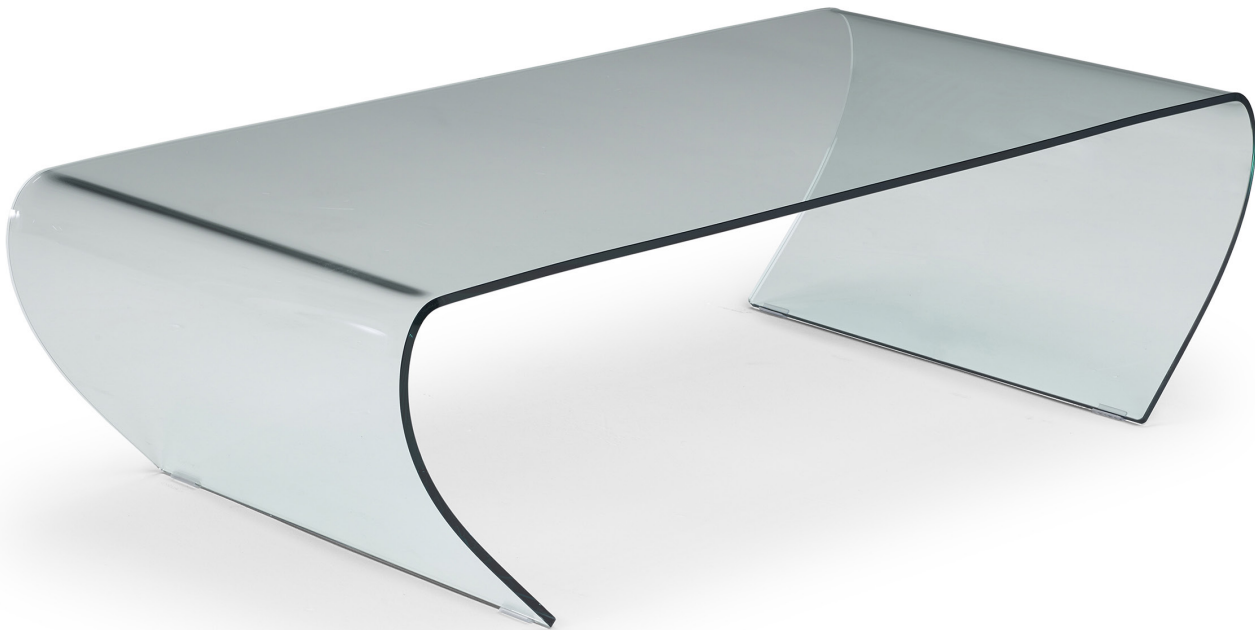
With water-resistant and stain-resistant treatment.

Made in Italy

NOTES



■ T18601X • 121 x 60 x H35 cm / 48 x 24 x H14 in

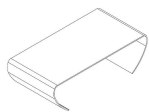


■ T18601X • Detail

ALL PICTURES SHOWN ARE FOR ILLUSTRATIVE PURPOSE ONLY. ACTUAL PRODUCT MAY VARY DUE TO PRODUCT ENHANCEMENT.

SCHEMATICS

RECTANGULAR CENTRAL



60cm x 121cm H 35cm
23,62" x 47,64" H 13,78"

FINISHINGS

Frame finishing



TRANSPARENT

Top finishing



TRANSPARENT

TECHNICAL INFORMATION

NOTES

by NATUZZI
DIVANI & DIVANI



■ T22209X / T22215X



■ T22208X / T22214X



■ T22209X / T22215X



■ T22208X / T22214X

ALL PICTURES SHOWN ARE FOR ILLUSTRATIVE PURPOSE ONLY. ACTUAL PRODUCT MAY VARY DUE TO PRODUCT ENHANCEMENT.

SCHEMATICS

RECTANGULAR FIXED



90cm x 160cm H 75cm
35,43" x 62,99" H 29,53"

90cm x 180cm H 75cm
35,43" x 70,87" H 29,53"

FINISHINGS

Frame finishing

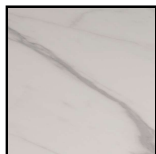


Brown Ash



Blonde Ash

Top finishing



Statuario

TECHNICAL INFORMATION

Designer: Mauro Lipparini

The Plettro dining table, designed by Mauro Lipparini, combines practicality and design thanks to the quality of the materials and its exclusive design. The top made with a ceramic layer, a refined but functional and resistant material, makes it suitable for both living and dining room with particular attention to trends in the world of contemporary furniture.

TECHNICAL FEATURES

Base: Solid Wood in Ash Brown or Blonde

Top: Arabescato Statuario Ceramic

NOTES

by NATUZZI
DIVANI & DIVANI



■ T22605X / T22611X



■ T22605X / T22611X

SCHEMATICS

RECTANGULAR FIXED



90cm x 160cm H 75cm
35,43" x 62,99" H 29,53"

90cm x 180cm H 75cm
35,43" x 70,87" H 29,53"

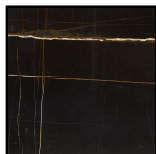
FINISHINGS

Frame finishing



Mat Black/Bronze

Top finishing



SAHARA NOIR

TECHNICAL INFORMATION

Designer: Manzoni & Tapinassi

Slancio dining table, characterized by slender and harmonious shapes, is designed by Manzoni & Tapinassi. The design project is enhanced by the combination of refined materials: the black polished ceramic top with gold veins and the legs in black painted metal with small bowl in bronze colored metallic paint.

TECHNICAL FEATURES

Base: Painted matt black metal with bronze detail

Top: Ceramic Sahara Noire

NOTES

by NATUZZI
DIVANI & DIVANI



■ T778001XOF / T778001XDD



■ T778001XOF / T778001XDD



■ T778001XOF / T778001XDD



■ T778001XOF / T778001XDD



■ T778001XOF / T778001XDD

ALL PICTURES SHOWN ARE FOR ILLUSTRATIVE PURPOSE ONLY. ACTUAL PRODUCT MAY VARY DUE TO PRODUCT ENHANCEMENT.

SCHEMATICS

Tondo FISSO



100cm x 200cm H 76cm
39,37" x 78,74" H 29,92"

FINISHINGS

Frame finishing



Lead Gray

Top finishing



WALNUT

TECHNICAL INFORMATION

Race dining table, designed by Natuzzi Design Center, with its exclusive design inspired from a motorcycle chassis, combines design, quality and solidity with its particular steel curved base and walnut veneered top.

TECHNICAL FEATURES

BASE: Steel structure with curved and welded parts, powder coated in metal grey finish

TOP: MDF Walnut Veneer

NOTES

by NATUZZI
DIVANI & DIVANI



■ W22204X / W22207X



■ W22204X / W22207X



■ W22203X / W22206X



■ W22203X / W22206X

ALL PICTURES SHOWN ARE FOR ILLUSTRATIVE PURPOSE ONLY. ACTUAL PRODUCT MAY VARY DUE TO PRODUCT ENHANCEMENT.

SCHEMATICS

SIDEBOARD WITH DOORS

50cm x 200cm H 80cm

19,69" x 78,74" H 31,5"

FINISHINGS

Frame finishing

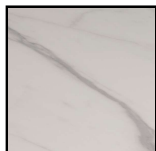


Brown Ash



Blonde Ash

Top finishing



Statuario

TECHNICAL INFORMATION

Designer: Mauro Lipparini

The Plettro sideboard, designed by Mauro Lipparini, combines practicality and design thanks to the quality of the materials and its exclusive design. The top made with a ceramic layer, a refined but functional and resistant material, makes it suitable for both living and dining room with particular attention to trends in the world of contemporary furniture.

TECHNICAL FEATURES

Top: Ceramic Arabescato Statuario;

Structure: MDF veneered in Brown or Blonde Ash;

Legs: Brown or Blonde Ash solid wood;

Doors: with "Push to Open" system opening;

NOTES

by NATUZZI
DIVANI & DIVANI



■ W22602X / W22604X



■ W22602X / W22604X



■ W22602X / W22604X

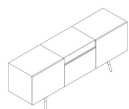


■ W22602X / W22604X

ALL PICTURES SHOWN ARE FOR ILLUSTRATIVE PURPOSE ONLY. ACTUAL PRODUCT MAY VARY DUE TO PRODUCT ENHANCEMENT.

SCHEMATICS

SIDEBOARD WITH DOORS



50cm x 195cm H 75cm
19,69" x 76,77" H 29,53"

FINISHINGS

Frame finishing



Mat Black/Bronze

Top finishing



Blonde Ash

TECHNICAL INFORMATION

Designer: Maurizio & Tapinassi

Slancio Sideboard, characterized by slender and harmonious shapes, is designed by Manzoni & Tapinassi. The design project is enhanced by the combination of refined materials: the black laquered drawer between the wooden structure and the legs in black painted metal with small bowl in bronze colored metallic paint.

TECHNICAL FEATURES

Structure: Veneered MDF in Blonde Ash;

Legs: Laquered Matt Black Metal / Bronze;

Upper Central Drawer: anthracite laquered MDF;

Doors: with "Push to Open" system opening;

NOTES
